

iWellnessExam

Elgin Family Eye Care is committed to providing the highest quality eye care. Our doctors have incorporated the iWellnessExam™ SD- OCT retinal scan as part of our comprehensive eye exams.

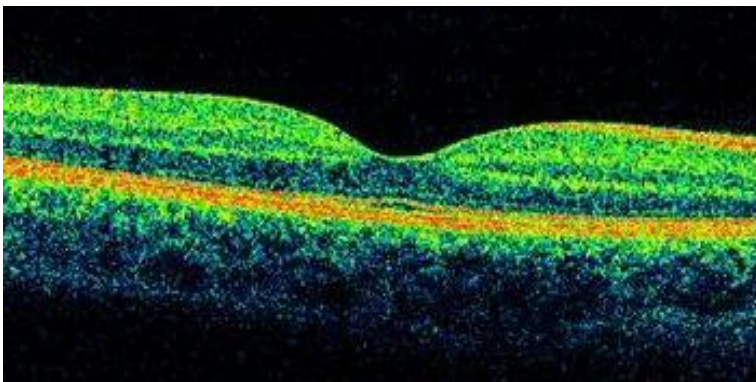
Sight threatening diseases such as glaucoma, macular degeneration, diabetic retinopathy and others often have no outward signs or symptoms, which is why eye exams, including a thorough retinal evaluation, are important to protect vision. In an effort to provide a more thorough eye exam, our practice has incorporated the iWellnessExam™ SD- OCT retinal scan in addition to Digital retinal imaging as part of your eye exam today.

As part of your pre-examination work-up, our technician will perform these two tests before you go into the exam room and your Doctor will review these with you during your examination today. These two tests will become a part of your permanent patient record. The \$39 charge is typically NOT covered by your medical or vision insurance. This cost will be added into the price of your visit today. Any questions you have about these tests can be discussed during your examination with the doctor.

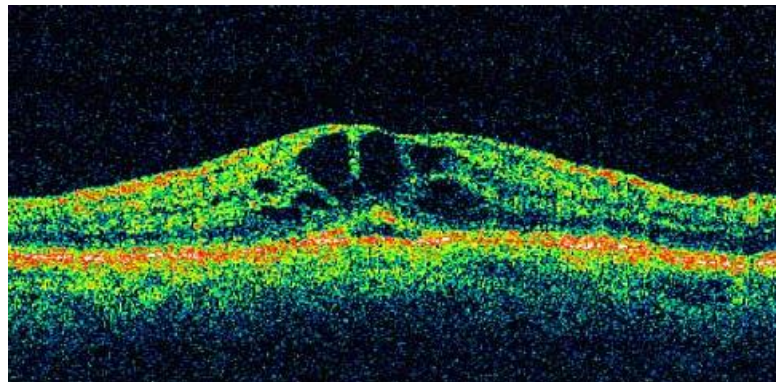
* The iWellnessExam is an eligible expense for Flexible Spending Accounts



Normal retinal photograph



Normal retinal cross section iWellness OCT



Diseased retina visible to iWellness OCT exam often invisible to photos and ophthalmoscopy